

## “NEW SHOES”

Objects theatre recommended for children from 3 years old and for family audiences



### TECHNICAL CONDITIONS-BY PLANE

---

#### SPACE OPTIONS:

##### \* Scenography and audience at the same level:

- Measures scenic area: 4,50 m. wide x 4,50 m. depth x 2,75 m. height (adaptable measures)
- Measures public space: 6m x 6m
- The organization will have to provide 40 chairs and carpets / cushions (or similar) to sit the children on the floor. If small benches are available, 3 levels can be created: carpet-benches-chairs, for create a small step and improve the public visibility.

##### \* Italian configuration-scenography on the stage and audience on the floor. Recommended for small theaters (ideal with bleachers):

- Measures scene: 4,50 m. wide x 4,50 m. depth x 2,75 m. height (adaptable measures)

#### FOR BOTH SPACE OPTIONS:

- Black background and black linoleum floor
- The organization will facilitate to the actor a wireless microphone (discreet) only if performances have made in a big room.

#### - Lighting:

- \* See flat lights attached for PC
- \* A lights technician during performances
- \* Darkness in the room

#### - Sound:

- \* 2 small self-amplified speakers (80 W or similar, jack or canon plug), or 2 normal speakers with an amplifier and a console.
- \* 1 shot of 220v on the stage

## **ASSEMBLY / DISASSEMBLY**

Set up: 3h (before the first performance)

Disassembly: 1h30

## **LENGTH OF THE SHOW**

30 minutes

Minimum 45 min between each performance

## **AUDIENCE**

75 children + teacher during school performances

100-120 people during family audiences

## **OTHER**

+ An iron

+ Running water and shower with hot water (if possible)

+ 1 technician to help load, unload as well as set up and disassembly.

+ Representative of the organization since the arrival of the company until its departure

+ 2 bottles of water of 1'5 liter.

For security measures, the company will arrive minimum 36 hours before the first performance (in case the suitcases are lost during the flight).

### Contacts:

Mélanie (office, 8h-15h): 0034-964.284.991

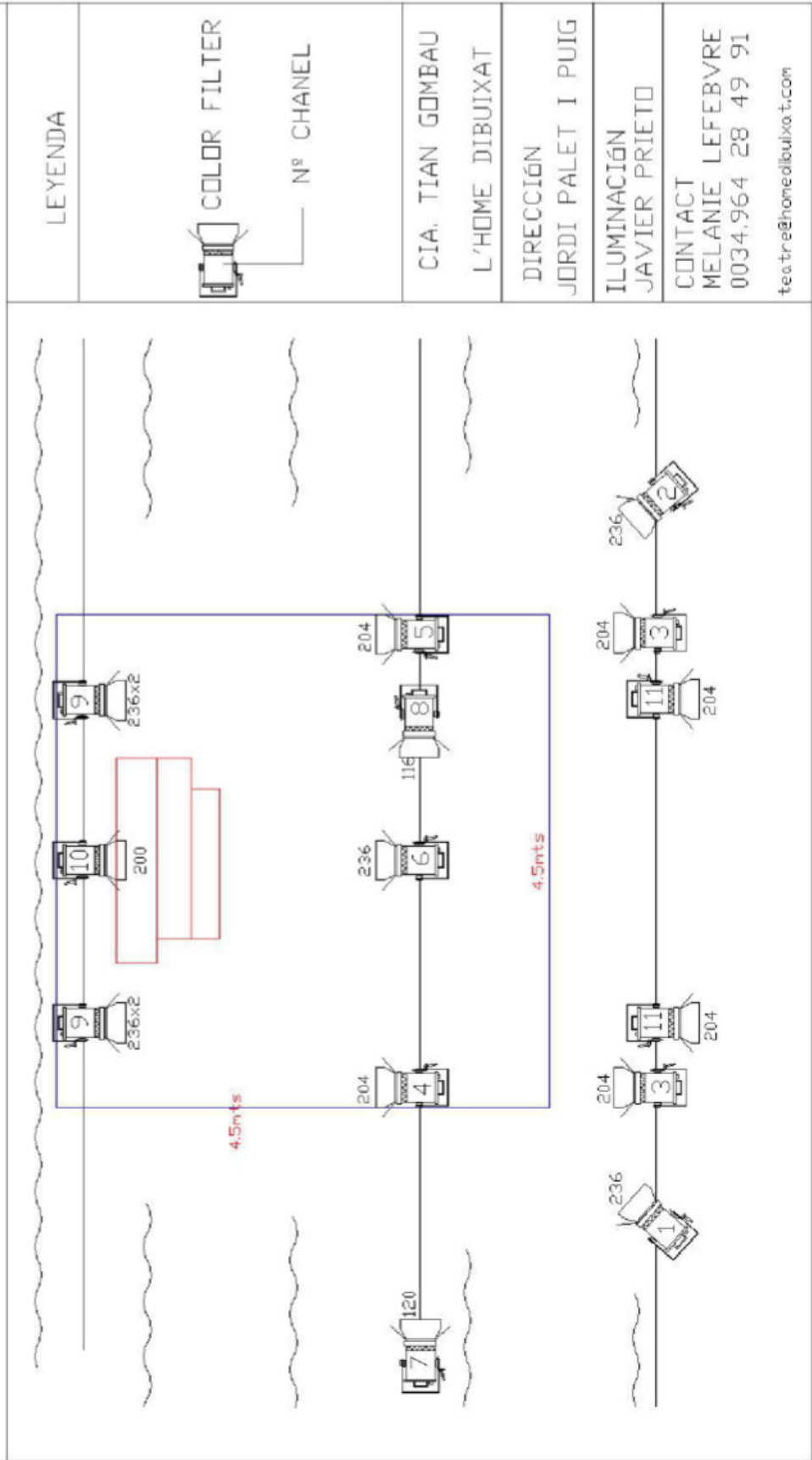
Tian (mobil): 0034-630.069.109

### DISTRIBUTION:

Ana Sala - IKEBANAH ARTES ESCÉNICAS

anasala@ikebanah.es - Tel. 619951791 / 960090504

# NEW SHOES



# FOCUSING

